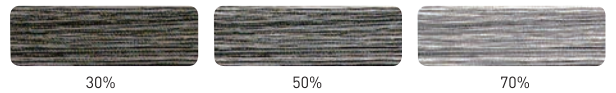


Choice of 3 colors
to suit every customer's taste

Samples of the amount of gray hair



NATURAL GRAY

ナチュラルグレー

Standard natural gray

Natural finish, easy to recommend to first-time customers.

Developing time

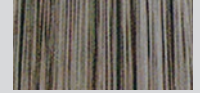
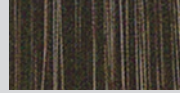
(Gray Hair Amount)

30%

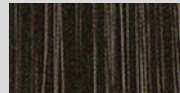
50%

70%

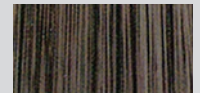
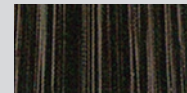
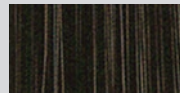
3 mins



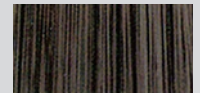
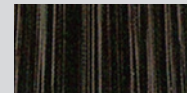
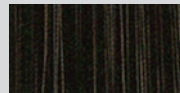
5 mins



7 mins



10 mins



Developing time

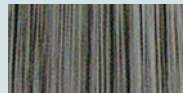
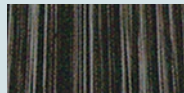
(Gray Hair Amount)

30%

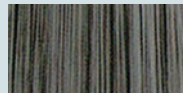
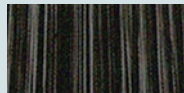
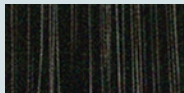
50%

70%

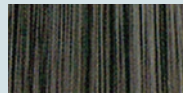
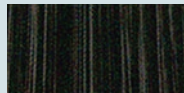
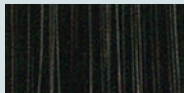
3 mins



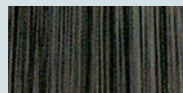
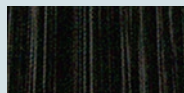
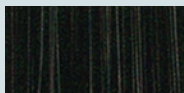
5 mins



7 mins



10 mins



BLUE GRAY

ブルーグレー

Sophisticated bluish gray

Best use of gray hair with mild bluish gray.



SOFT GRAY

ソフトグレー

Pale soft gray

Soft finish of pale color. Suitable for the customers with a lot of gray.

Developing time

(Gray Hair Amount)

30%

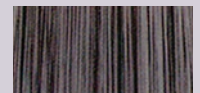
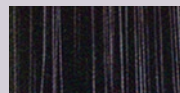
50%

70%

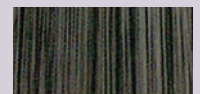
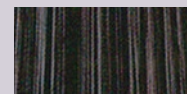
3 mins



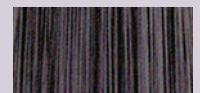
5 mins



7 mins



10 mins



<Caution>

※ Read and follow instruction before use. DO NOT use this product if you have ever experienced any reactions after coloring your hair.
※ Allergic skin test must be conducted each time before use of hair color.